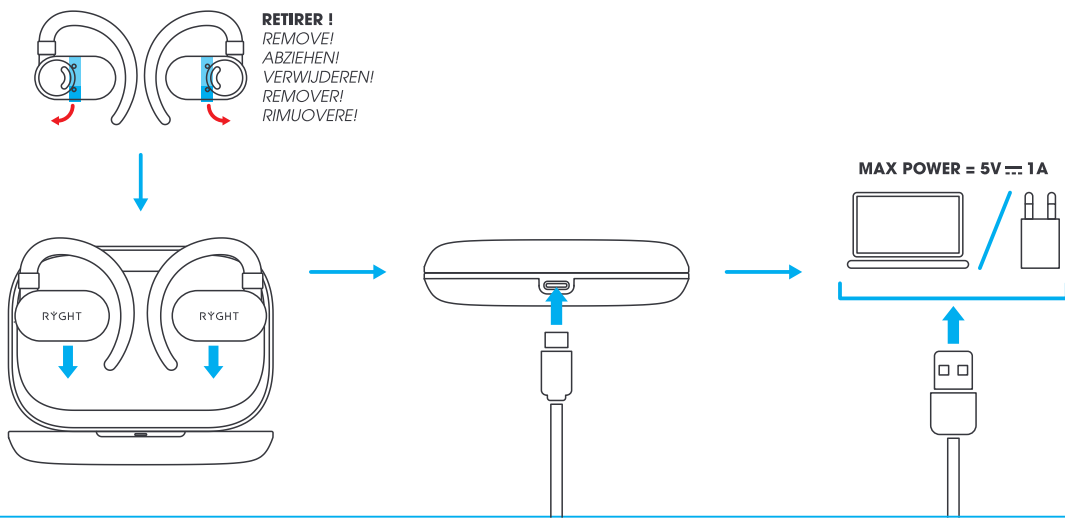




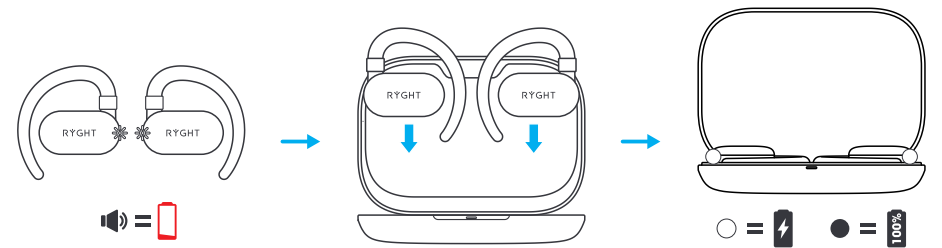
1

FR · CHARGER

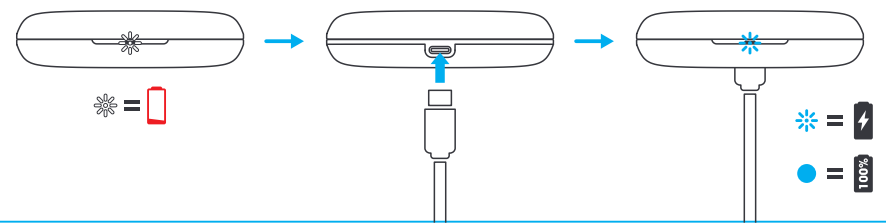
EN · CHARGE  
DE · AUFLADEN  
NL · OPLADEN  
ES · CARGAR  
IT · CARICARE



EARPHONES



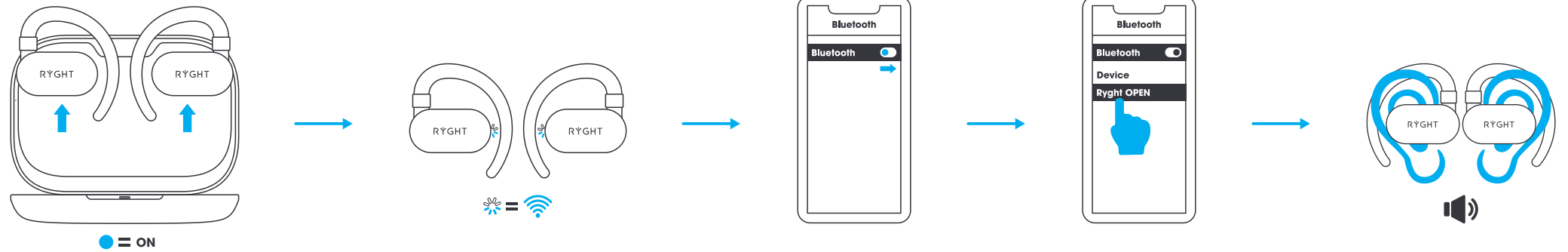
CASE



2

FR · JUMELER

EN · PAIR  
DE · PAAREN  
NL · KOPPELEN  
ES · SINCRONIZAR  
IT · ACCOPPIARE

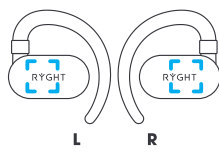


3

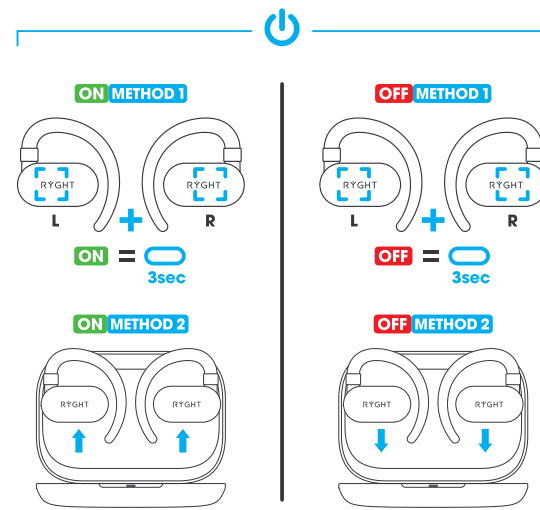
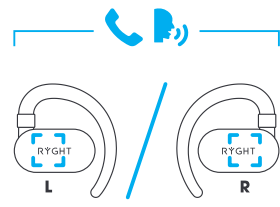
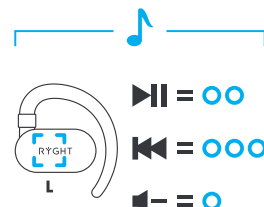
FR · UTILISER

EN · HOW TO USE  
DE · VERWENDEN  
NL · GEBRUIKEN  
ES · UTILIZAR  
IT · USARE

CONTROLS



- TOUCH ZONE
- TOUCH 1x
- TOUCH 2x
- TOUCH 3x
- TOUCH 1s
- TOUCH 3s



5

FR · ATTENTION

EN · WARNING  
DE · WARNUNG  
NL · WAARSCHUWING  
ES · ADVERTENCIA  
IT · AVERTENZA

FR. Pression acoustique élevée. Ne pas écouter à des niveaux volume élevés pendant des périodes prolongées. Risque de détériorer votre audition.

EN. High sound pressure. Do not listen at high volume levels for extended periods of time. This may damage your hearing.

DE. Hoher Schalldruck. Hören Sie nicht über einen längeren Zeitraum mit hoher Lautstärke. Kann Ihr Gehör schädigen.

NL. Hoge geluidsdruk. Luister niet gedurende langere tijd naar hoge geluidsniveaus. Dit kan uw gehoor beschadigen.

ES. Alta presión sonora. No escuche a niveles de volumen elevados durante períodos prolongados. Esto puede dañar su audición.

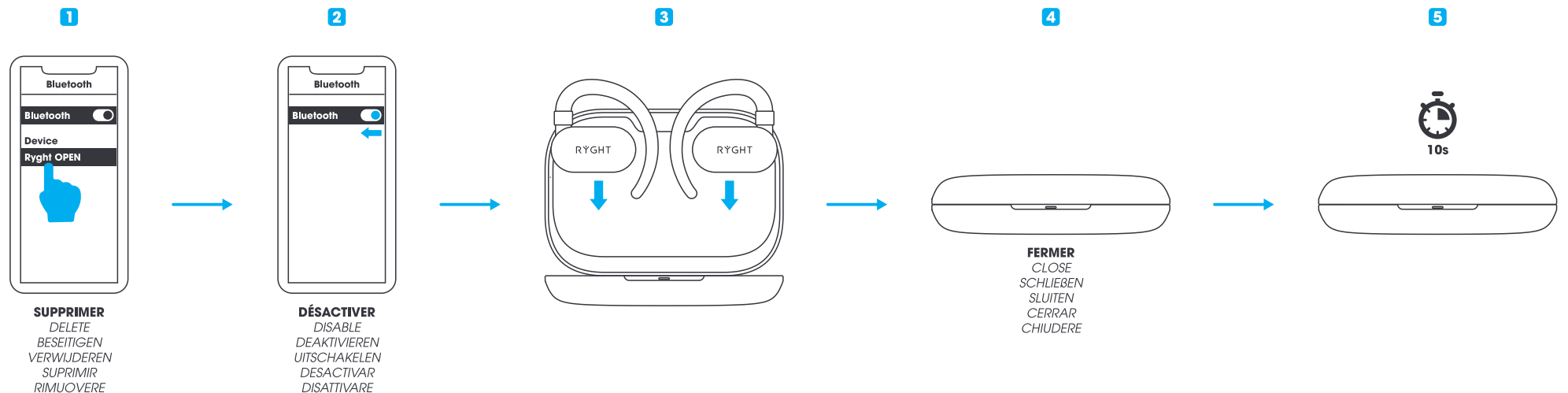
IT. Alta pressione sonora. Non ascoltare ad alto volume per periodi prolungati. Ciò può danneggiare l'udito.



6

FR · RÉINITIALISER

EN · RESET  
DE · ZURÜCKSETZEN  
NL · RESETTEN  
ES · REINICIAR  
IT · RESET



**SUPPRIMER**  
DELETE  
BESEITIGEN  
VERWIJDEREN  
SUPRIMIR  
RIMUOVERE

**DÉSACTIVER**  
DISABLE  
DEAKTIVIEREN  
UITSCHAKELLEN  
DESACTIVAR  
DISATTIVARE

**FERMER**  
CLOSE  
SCHLIEßEN  
SLUITEN  
CERRAR  
CHIUDERE

